



# KUBER GROUP

Your Trust & Satisfaction is our Pride



- ▶ ALLOY STEEL
- ▶ SPRING STEEL
- ▶ MICRO ALLOY STEEL
- ▶ FREE CUTTING STEEL
- ▶ NITRIDING STEEL
- ▶ CARBON STEEL
- ▶ CAST IRON

- ▶ ROUND BARS
- ▶ SQUARE BARS (RCS/SCS)
- ▶ FLAT BARS
- ▶ HEX BARS
- ▶ CAST BILLETS / INGOTS
- ▶ FORGED BARS
- ▶ ROLLS & CASTINGS



## Overview

Kuber Group is an ISO 9001:2015 certified unit comprising of Kuber Castings, Kuber Concast and Akshat alloys which is located in the Hub of Steel Industry in Mandi Gobindgarh, Punjab (India). It is located around 250 Kms from Indian Capital Delhi. Our nearest ICD (dry port) is Ludhiana about 40km from our plant and nearest Sea Port is Mundra in Gujrat state.

We are manufacturing carbon steels, spring steels, Alloy Steels in Round bars, Square bars, Flat bars, Hex bars, Forged bars etc. and in addition we manufacture Steel Casting weighing upto 25MT single piece. One of our unit Euro TMT is in Mauritius which is pioneer in TMT bars production.

Apart from a good customer base in India we have our valued customers in EUROPE, MIDDLE EAST, ASIA & AFRICA.

We are catering to Automotive parts manufacturers, Agriculture implements manufacturers, Machine manufacturers and to oil & Gas field.

KUBER GROUP is one of the rarest special steel producers who can satisfy its customers through unmatched product/ profile / size ranges and gives advantage of minimum 5mt order qty. per size so that in one basket they can choose different sizes and grades to fulfill their need.





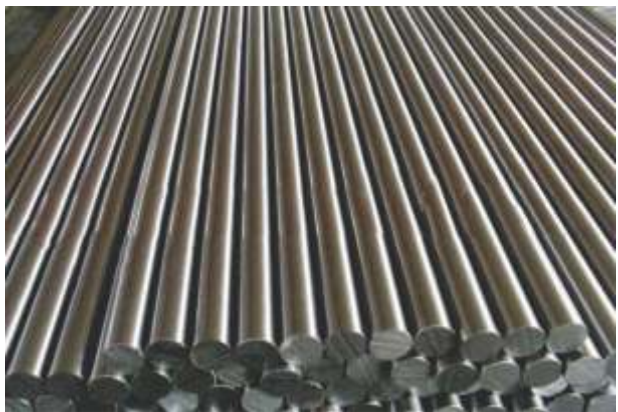
## Directors Message

KUBER GROUP has a clear vision to build up an abiding trust by delivering reliable quality of steel products and services to our valuable customers through continual improvement in our processes and products in a cost-effective manner.

Its our dream to become a renowned producer of alloys, springs and special steels in domestic and international market .

We are committed to all our customers for delivering our Best Product Quality, Timely Delivery and Prompt Services.

To meet future market challenges of Quality & competitiveness our endeavor shall be the continuous upgradation of our technology , skill development of our employees and upgradation of our quality management system .





## Plant & Machinery

- Electric Furnace -20MT Capacity.
- Ladle Refining Furnace.
- Vacuum Degassing
- Cored Wire Feeding System
- Continuous Casting Machine of 10.25/19 & 6/11 Meter radius .
- Electro Magnetic stirrer.
- 3 High, 24" Rolling Mill.
- 3 High, 18" Rolling Mill.
- 3High 10" Rolling Mill
- Reheating furnace - Pusher type.
- Descaler.
- Heat treatment furnace with 30mt capacity
- Roller Straightening Machines 2nos.
- Press type straightening Machine
- Draw Bench for cold drawing
- Peeled & Ground bars production facility.
- Oxygen Plant 170Cubic Meter Capacity
- Forging Ingot Casting Facility
- Casting of Rolls, Rings, Fly Wheels, Pinions, Gears
- Heavy Rounds Hot Forging Facility

## Key Strengths

- Shortest Delivery times for Domestic and Export Customers.
- Largest No. of Product/Profile Range.
- Optimum Heat Size of 20mt
- Cast Size – 305X355mm One of the largest in alloy steel industry in india.
- Minimum order qty. per size is 5mt
- Prompt response to the Customers.



## Cast, Rolled & Forged Size Range

- Cast Size (mm) : 100X100, 125X125, 160X160, 200X200  
160X180, 180X220, 240X280, 280X320, 305x355
- Round Black Bar : 12 to 220mm
- Round Corner Square : 40 to 150mm
- Sharp Corner Square : 16 to 54mm
- Round Bright Bar : Cold drawn : 12 to 75mm  
Peeled & Ground : 20mm to 150mm  
Peeled, Center-less Grinding With guaranteed  
Surface level can offer tolerance in the range h11 and h9
- Flats (mm) : Width : 45 to 220 Thickness : 6 to 100.
- Hot Forged bars : 150mm to 400mm
- Special Profiles : As per order

## Product Supply Conditions

- Hot Rolled Black Bars
- Hot Forged Bars
- Hot Forged & Turned/Machined Bars.
- Bright Bar in Cold Drawn, Peeled & Polish supply condition in h11 /h9 tolerances.
- Heat Treatment Condition: Annealing, Spherodising Annealing, ISO-Annealing, Normalizing & Tempring.
- Hardened & Tempered in specified Conditions like S', 'T', 'U', 'V' & 'W'.

## Testing Equipments

- O.E Spectrometer.
- Mobile Spectrometer.
- Metallurgical Microscope with image Analyzer.
- Rock well Hardness Tester.
- Brinell Hardness Tester.
- Universal Testing Machine.
- Impact Testing Machine.
- Jominy Quenching Apparatus.
- Radioactive Element Check Meter.
- Ultrasonic Flaw Detector.
- Magnetic Particle Inspection.
- Upset Test Press.





## PRODUCT RANGE

### STEEL CATEGORIES

#### Carbon Steel

##### Plain Carbon Steel

5C8, 35C8, C30, C35, C40, 45C8, C45CR, C48, C50, 55C8, C55, C65, CK35, CK45, EN1A, EN3, EN32B, EN42, EN43, EN43AM, EN43D, EN8, EN8D CR, EN9, JDMA 1045, S20C, S25C, S35C, S38C, S40C, S43C, S45C, S48C, S50C, S53C, SAE 1010, SAE 1015, SAE 1016, SAE 1018, SAE 1019, SAE 1020, SAE 1025, SAE 1030, SAE 1035, SAE1037, SAE 1038, SAE 1040, SAE 1041, SAE 1045, SAE 1047, SAE 1050, SAE 1052, SAE 1055, 080A47, SAE 1065, SAE 1070.

##### Carbon Manganese Steel

20MN2, 27C15, 27MN2, 37C15, 37MN2, EN 15, EN 15A, SAE 1524, SAE 1541, SAE 1548, 45M5, S355J2+N, ST52-3, ST 50-2.

#### Case Hardening Steel

##### Chrome Steel

SCR415H, SCR420H

##### Chrome Manganese Steel

16MNCr5, 16MNCrS5, 20MNCr5

##### Scm Category Steel/ Chrome-Moly Steel

SCM415H, SCM420H, 20M0CR4E

##### Nickel Chrome/ Nickel Chrome Moly Steel

SAE6820H, SAE622, SAE6825, En353, En354, En355, 15CrNi6, 16CrNi4, 17CrNiMo6, 19CrNi5, 20NiCr6, 20NiCrMoS6-4, SAE3420, 815M17, 20CrNi4, 18NCD6, 27CD4

#### Through Hardening Steel

##### Chrome Steel

34Cr4, 40Cr4, 40Cr4B, 40Cr4C, 41Cr4, En18, En18C, En18D, SAE5135, SAE5145H, SAER5150

##### Chrome Moly Steel

25CrMo4, 40CrMo2, 40MoCr4, 42Cr4Mo2, 42Cr4Mo4, 42CrMo2, 42CrMo4, AISI4142H, AISI4150, En19, En91C, SAE4130, SAE4135, SAE4137, SAE4140, SAE4142, SAE4147, 708M42

##### SCM Category Steel

SCM435, SCM35H.

##### Chrome/Ni-Moly Steel

SAE 8640, 40NICRMO4, SAE 4340, EN24

##### Moly Steel

35MN6MO3, EN16, EN16C, EN17

#### Other Categories

##### Boron Steel

SAE-41B30, SAE1036B, SAE15B35H, SAE10B25H, 38B3, SAE15B41H, 58CRMNB4, SAE 40B37, 30MNB4, SCRB435H, 20MNB5, 20MNCRB5, TIEO311.

##### Micro Alloyed Steel

30MSV6, 38MNSIV55, C70S6, 38MNV56

##### Vanadium Steel

En47, 52CR4MO2V, 31CRV3

##### Nitriding Steel

EN41B

##### Ball Bearing Steel

EN31, SAE52100, DIN100CR6

##### Free/Semi Free Cutting Steel

En15AM, En18DM, En1A, En8DM, En8M, SAE1117, AE1118, SAE1137, SAE1140, SAE1141, SAE1144, SA1145S, SAE1215

##### Spring Steel

En45, En45A, 55Si7, 60Si7, 37MnSi5, SUP11A, SUP 10, SUP9, SUP6, 50CrV4, En47, 52Cr4Mo2V, SAE4161H, 51CrV4, 55Cr3, SAE 5160, SAE 6150, SAE9284

##### Stainless Steel

AISI 410, AISI 420, AISI 416 M.

##### Nitralloy

R7088, R7103, R7104, 40CAD

##### Creep Resistant Steel

P11, T11, F11, P22, T22, F22, F92.

##### File Steel

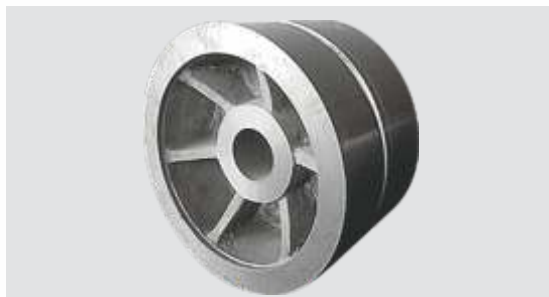
High C-Cr Steels

## Special Steel Castings

We also undertake special Castings orders as per customers requirement. We Cast Pinions, Chocks, Gears, Trash Plates, Mill Head, Klin Tyres, Girth Gears, Shaker Hearth Trays, Fly Wheels, Slag Ladle Cups, Blank Gears, Couplings, Collier Tyres and any other Steel Castings from 500 Kg to 20MT single piece.



**SUGAR MILL PINIONS**



**DOUBLE HELICAL REDUCTION GEAR**



**GIRTH GEAR**



**TRUNION FOR CEMENT MILL**

## Cast Rolls



- Alloy Steel Rolls
- Adamite Rolls



- Spheroidal Graphite Cast Iron Rolls / Rings
- Graphite Steel Rolls

## Kuber Concast

Vill. Kumbra, Opp. Truck Stand, Near Focal Point  
Mandi Gobindgarh-147301 (Pb.) INDIA

(M) +91 98142 55489, +91 97804 00489  
+91 98140 79795

E-mail : kuberconcast@gmail.com

[www.kubergroup.co.in](http://www.kubergroup.co.in)

## Akshat Alloys

Mandi Gobindgarh-147301 (Pb.) INDIA

## Kuber Casting Pvt. Ltd.

G.T. Road, Sirhind Side, Mandi Gobindgarh  
- 147301, (Pb.) INDIA

Tel. : 01765-252437, 255409

Fax : +91-1765-254876

(M) : +91-98142 55489, +91-98140 79795

E-mail : kuber casting@gmail.com

Allied Concern :

## Shankar Steels Ltd.

Port Louis, Mauritius

Mfrs. of : TMT

